

**SMART<sup>®</sup>**



***Service Parts  
Diagrams***

**For Model:  
SBID-7286P**

# Service Parts Diagrams Revision History

## Revision 1 - January, 2018

- New document

## Standard Warranty Terms

Base product: Three-year limited equipment warranty

First Customer Ship: February, 2018

---

**SMART Technologies**

3636 – Research Road NW

Calgary, AB T2L 1Y1

CANADA

Support +1.403.228.5940 or Toll Free 1.866.518.6791 (Canada/U.S.)

Support Fax +1.403.806.1256

[www.smarttech.com/contactserviceparts](http://www.smarttech.com/contactserviceparts) [www.smarttech.com](http://www.smarttech.com)

The SMART logo consists of the word "SMART" in a bold, black, sans-serif font. The letters are slightly stylized, with the 'S' and 'M' having a more rounded appearance. A registered trademark symbol (®) is located at the bottom right of the 'T'.

# Service Parts Diagrams for the SBID-7286P

---

Identifying Your Product Using the Serial Number ..... 1  
Ordering Parts ..... 1  
SBID-7286P Parts ..... 2



## Identifying Your Product Using the Serial Number

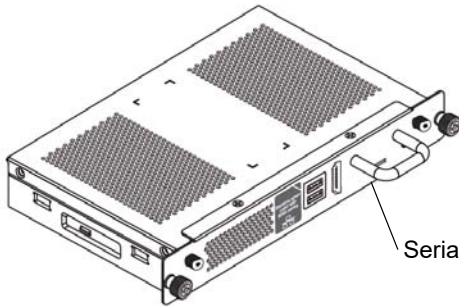
To make sure that you have the correct service parts diagrams, you must verify the serial number of your SBID-7286P. The serial number of the flat panel display will be located on the right underside of the bottom bezel. The serial number of the AM40 will be located on the bottom of the appliance. An example of the serial number format is shown below.



Serial Number Location

Unique Serial Number

**K032JW50C0112**



Serial Number Location

Unique Serial Number

**F102JW41C00334**

## Ordering Parts

### Customers

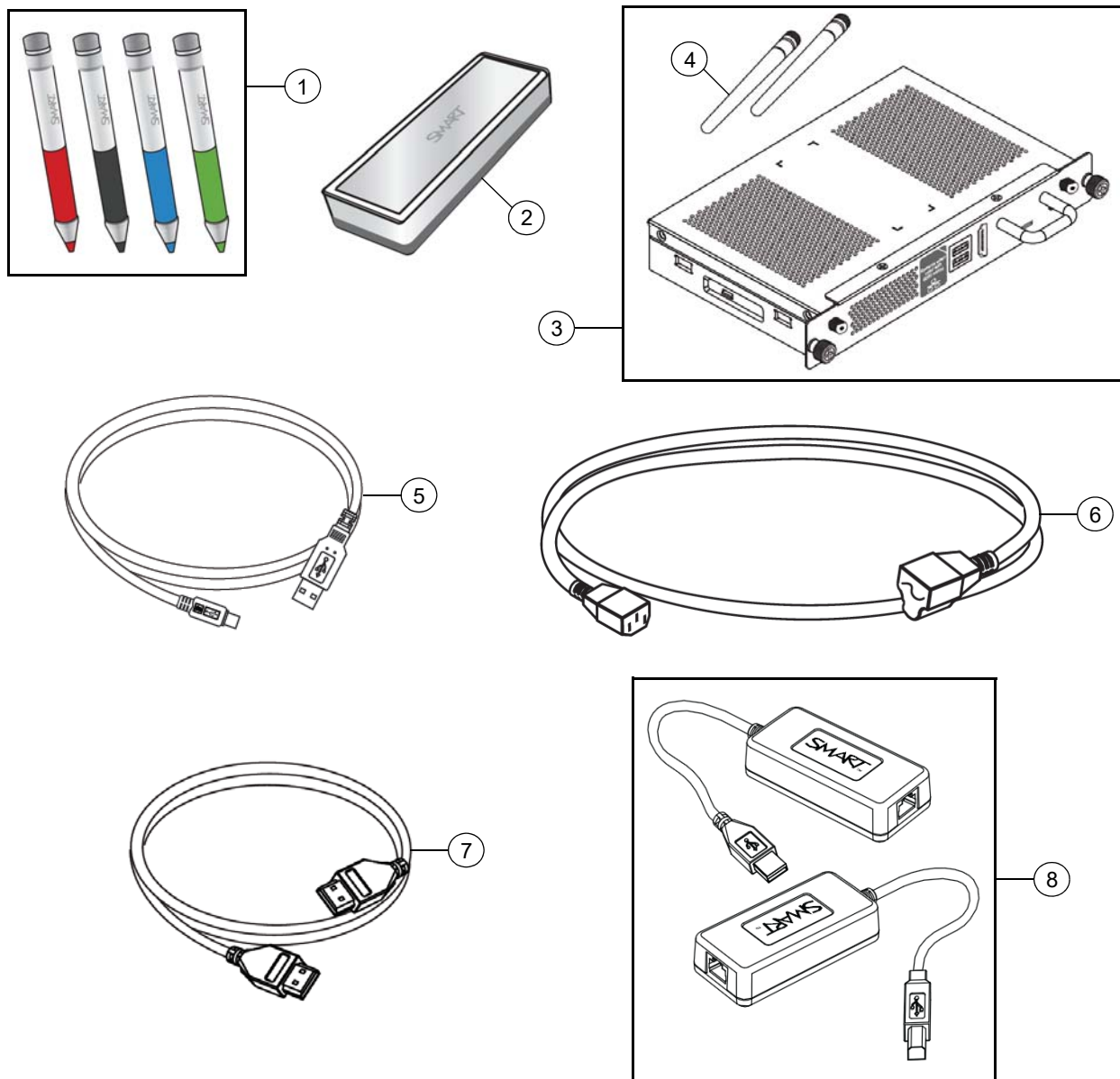
To order any of the parts in these service parts diagrams, contact your local reseller. To find a reseller near you, visit [www.smarttech.com/where](http://www.smarttech.com/where).

### Dealers and Distributors

For specific technical and pricing enquiries in regards to these diagrams please contact our service parts department. Pricing is also available on-line via the SOURCE website ([source.smarttech.com](http://source.smarttech.com)).

Web Form: [www.smarttech.com/contactserviceparts](http://www.smarttech.com/contactserviceparts)  
Phone: 1.888.42.SMART  
International: +1.403.245.0333

## SBID-7286P Parts



Item	Part No.	Qty	Description
1	1030623	1	Assembly, active stylus, 4-pack, Professional (red, black, blue, green)
2	1030772	1	Assembly, eraser, Professional
3	UGK-AM40-ENT	1	iQ appliance for enterprise for SMART Board 6000 Pro and 7000 Pro series interactive displays <b>NOTE:</b> Includes AM40 and 2 pieces of item 4. <b>NOTE:</b> This is to replace AM40's that have a part number of 1029948.
4	1029824	2	Antenna
5	1028289	1	Cable, USB, A-B, 16' (5.0 m)
6	1022063	1	Cable, power, North America, 8' (2.4 m)
6	93-055	1	Cable, power, United Kingdom, 8' (2.4 m)

6	93-056	1	Cable, power, Australia, 8' (2.4 m)
6	93-054	1	Cable, power, Europe, 8' (2.4 m)
6	93-00708-20	1	Cable, power, China, 8' (2.4 m)
6	93-00654-20	1	Cable, power, Japan, 8' (2.4 m)
6	93-063	1	Cable, power, South Africa, 8' (2.4 m)
6	1018969	1	Cable, power, Singapore, 14' 9" (4.5 m)
6	1018970	1	Cable, power, India, 14' 9" (4.5 m)
6	1018971	1	Cable, power, Saudi Arabia, 14' 9" (4.5 m)
6	1018972	1	Cable, power, Brazil, 14' 9" (4.5 m)
6	1025597	1	Cable, power, Argentina, 14' 9" (4.5 m)
6	1025603	1	Cable, power, Chile and Italy, 14' 9" (4.5 m)
6	1030859	1	Cable, power, Korea, 8' (2.4 m)
7	1019416	1	Cable, HDMI male to HDMI male, 20' 8" (6.3 m)
8	CAT5-XT-1100	1	CAT 5 to USB Extender, CAT5 Cable not included